

COMBINED STATE BINDER GROUP ROUND ROBIN 2008-3

SUMMARY B

PG 64-28

Supplier Number	Rotational Viscosity (Pa.s) @135°C	DSR Original (kPa) @64°C	DSR RTFO (kPa) @64°C	DSR PAV (kPa) @25°C	Mass Loss (%) @163°C	BBR S-value (MPa) @-12°C	BBR m-value @-12°C
IADOT	0.560	1.33	2.93	2389	-0.156	192	0.305
MNDOT	0.537	1.38	3.37	2815	-0.100	180	0.319
NCSPC	0.534	1.46	3.24	2500	-0.129	176	0.316
NDDOT	0.535	1.36	2.88	3031	-0.213	185	0.312
NEDOR	0.559	1.41	3.43	2700	-0.137	218	0.299
OHDOT D2	0.570	1.47	3.21	3158	-0.220	220	0.314
SDDOT	0.563	1.48	3.17	2725	-0.150	222	0.317
UW	0.618	1.43	3.13	2604	-0.452	210	0.304
WISDOT	0.578	1.37	2.96	2637	-0.163	175	0.302
07	0.552	1.46	3.19	2744	-0.184	192	0.305
12	0.560	1.44	3.16	2547	-0.202	202	0.312
22	0.550	1.32	2.83	3740	-0.166	208	0.314
24	0.595	1.46	3.36	2650	-0.153	200	0.319
29	0.549	1.25	2.91	2845	-0.241	205	0.306
35	0.375	1.52	3.31	2840	-0.129	200	0.300
37	0.588	1.45	2.67	3136	-0.174	206	0.302
42	0.584	1.38	3.04	2814	-0.257	204	0.320
43	0.552	1.45	3.06	2723	-0.150	213	0.311
49	0.560	1.30	3.19	2294	-0.144	193	0.322
65	0.616	1.48	3.60	2707	-0.171	184	0.317
69	0.557	1.44	2.87	3142	-0.192	204	0.308
70	0.540	1.41	2.99	2797	-0.141	206	0.312
77	0.570	1.75	5.42	3031	-0.536	215	0.307
83	0.603	1.38	3.13	1927	-0.159	178	0.319
95	0.570	1.42	2.98	2399	-0.143	209	0.312
A	0.546	1.41	3.25	2605	-0.179	203	0.316
B	0.552	1.50	3.57	2441	-0.125	193	0.311
C	0.556	1.35	3.03	2731	-0.207	207	0.306
E	0.588	1.33	3.02	2933	-0.203	189	0.318
F	0.556	1.43	3.18	2777	-0.182	209	0.305
J	0.599	1.37	3.03	2337	-0.127	182	0.312
L	0.607	1.33	2.91	3183	-0.160	201	0.310
M	0.472	1.44	2.99	2391	-0.183	194	0.316
O	0.569	1.32	3.00	2,674	-0.120	218	0.305
P	0.548	1.42	3.24	2199	-0.144	200	0.315
S	0.609	1.55	3.25	2723	-0.224	190	0.306
T	0.574	1.47	3.33	2436	-0.154	202	0.318
U	0.578	1.45	3.37	2538	-0.137	203	0.318
V	0.565	1.37	3.14	2624	-0.186	198	0.318
Average	0.561	1.42	3.19	2,705	-0.184	200	0.311
Std. Dev.	0.0410	0.0851	0.4183	322.57	0.0814	12.37	0.0063
Coef. of Var.	7.312	5.997	13.124	11.926	44.139	6.198	2.012

COMBINED STATE BINDER GROUP ROUND ROBIN 2008-3
SUMMARY B

A	Rot. Visc.	ODSR	RTFO DSR	PAVDSR	Mass Loss	S-value	m-value
19	0.545	1.40	3.25	2810	-0.188	206	0.314
51	0.546	1.42	3.33	2420	-0.173	202	0.310
97	0.550	1.41	3.26	2610	-0.191	203	0.321
98	0.544	1.40	3.15	2581	-0.163	201	0.320
Average	0.546	1.41	3.25	2605	-0.179	203	0.316

B	Rot. Visc.	ODSR	RTFO DSR	PAVDSR	Mass Loss	S-value	m-value
01	0.548	1.52	3.63	2296	-0.135	201	0.317
17	0.558	1.52	3.58	2564	-0.112	199	0.306
45	0.550	1.47	3.49	2464	-0.127	178	0.311
Average	0.552	1.50	3.57	2441	-0.125	193	0.311

C	Rot. Visc.	ODSR	RTFO DSR	PAVDSR	Mass Loss	S-value	m-value
21	0.557	1.31	2.90	2612	-0.279	204	0.307
28	0.555	1.34	3.18	2865	-0.221	208	0.306
66	0.556	1.36	2.96	2606	-0.208	207	0.304
90	0.550	1.36	3.10	2821	-0.162	211	0.305
99	0.562	1.37	3.02	2752	-0.166	206	0.306
Average	0.556	1.35	3.03	2731	-0.207	207	0.306

E	Rot. Visc.	ODSR	RTFO DSR	PAVDSR	Mass Loss	S-value	m-value
15	0.588	1.33	2.98	2998	-0.192	191	0.318
89	0.588	1.32	3.05	2868	-0.213	186	0.317
Average	0.588	1.33	3.02	2933	-0.203	189	0.318

F	Rot. Visc.	ODSR	RTFO DSR	PAVDSR	Mass Loss	S-value	m-value
02	0.550	1.42	3.12	2677	-0.213	208	0.299
11	0.560	1.42	3.38	3188	-0.194	210	0.305
34	0.585	1.39	3.04	2564	-0.166	215	0.306
48	0.556	1.43	3.16	2812	-0.180	210	0.309
56	0.542	1.50	3.12	2832	-0.169	199	0.309
62	0.544	1.40	3.23	2587	-0.167	210	0.301
Average	0.556	1.43	3.18	2777	-0.182	209	0.305

J	Rot. Visc.	ODSR	RTFO DSR	PAVDSR	Mass Loss	S-value	m-value
05	0.603	1.39	3.11	2245	-0.165	184	0.305
08	0.593	1.39	3.06	2185	-0.100	181	0.314
31	0.599	1.38	3.13	2307	-0.173	176	0.315
41	0.609	1.38	3.08	2192	-0.100	180	0.320
44	0.591	1.34	2.92	2428	-0.090	186	0.309
52	0.600	1.36	3.00	2624	-0.164	188	0.309
74	0.600	1.35	2.93	2381	-0.096	182	0.315
Average	0.599	1.37	3.03	2337	-0.127	182	0.312

L	Rot. Visc.	ODSR	RTFO DSR	PAVDSR	Mass Loss	S-value	m-value
25	0.613	1.33	2.79	3151	-0.158	199	0.310
59	0.600	1.32	3.02	3214	-0.161	202	0.310
Average	0.607	1.33	2.91	3183	-0.160	201	0.310

M	Rot. Visc.	ODSR	RTFO DSR	PAVDSR	Mass Loss	S-value	m-value
04	0.475	1.44	3.00	2352	-0.183	195	0.314
47	0.469	1.48	3.07	2387	-0.180	191	0.317
57	0.471	1.40	2.89	2435	-0.187	196	0.316
Average	0.472	1.44	2.99	2391	-0.183	194	0.316

O	Rot. Visc.	ODSR	RTFO DSR	PAVDSR	Mass Loss	S-value	m-value
76	0.567	1.35	3.06	2664	-0.107	229	0.304
85	0.570	1.28	2.94	2684	-0.132	206	0.306
	0.569	1.32	3.00	2674	-0.120	218	0.305

P	Rot. Visc.	ODSR	RTFO DSR	PAVDSR	Mass Loss	S-value	m-value
30	0.550	1.48	3.43	1873	-0.170	203	0.312
71	0.550	1.42	3.31	2330	-0.107	206	0.316
73	0.545	1.37	2.97	2394	-0.156	190	0.316
Average	0.548	1.42	3.24	2199	-0.144	200	0.315

S	Rot. Visc.	ODSR	RTFO DSR	PAVDSR	Mass Loss	S-value	m-value
53	0.609	1.55	3.20	2794	-0.226	191	0.306
64	0.609	1.55	3.30	2651	-0.222	188	0.305
Average	0.609	1.55	3.25	2723	-0.224	190	0.306

T	Rot. Visc.	ODSR	RTFO DSR	PAVDSR	Mass Loss	S-value	m-value
39	0.568	1.49	3.35	2381	-0.157	198	0.320
87	0.580	1.45	3.31	2491	-0.151	206	0.316
Average	0.574	1.47	3.33	2436	-0.154	202	0.318

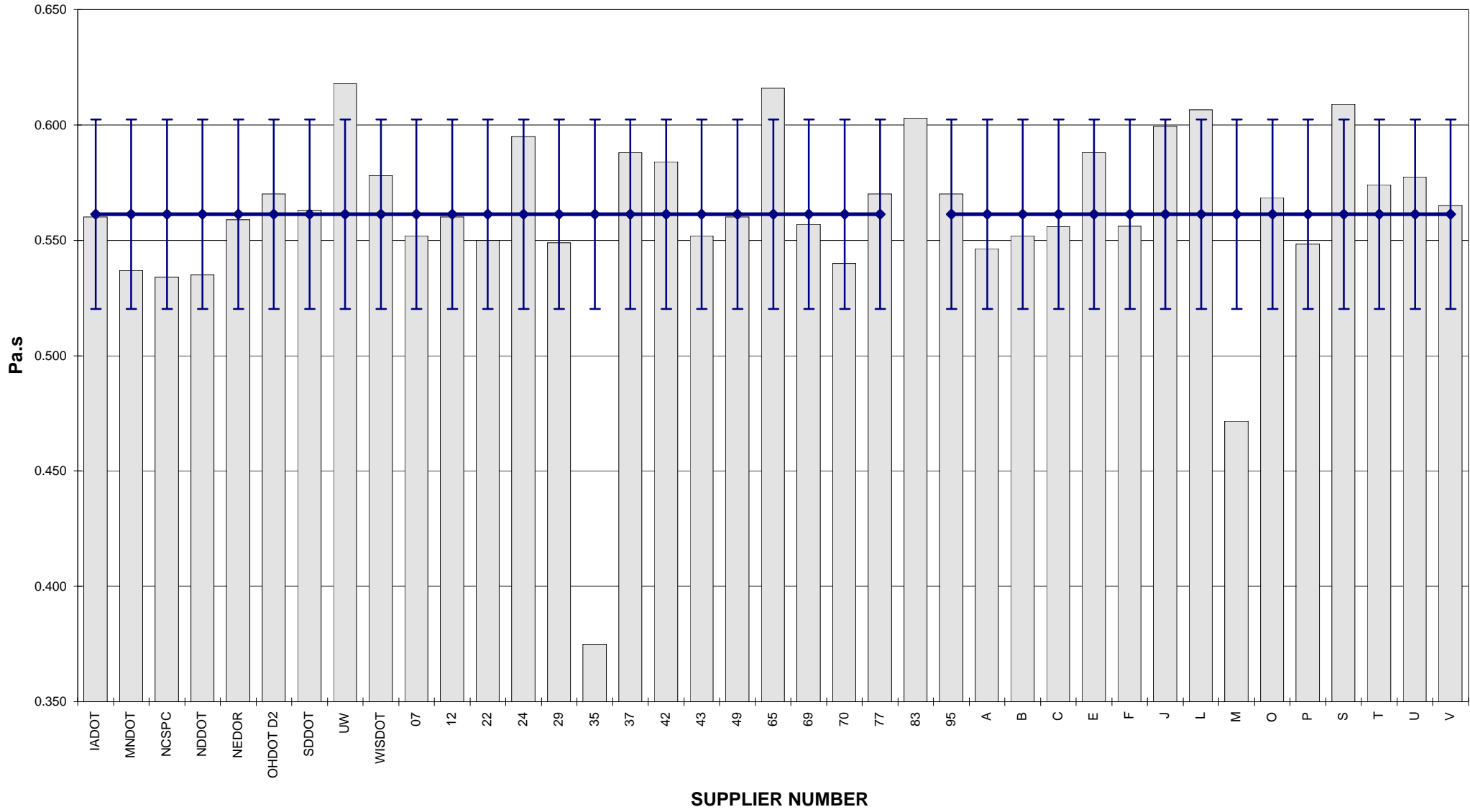
U	Rot. Visc.	ODSR	RTFO DSR	PAVDSR	Mass Loss	S-value	m-value
13	0.570	1.46	3.36	2535	-0.132	198	0.321
93	0.585	1.43	3.37	2540	-0.142	207	0.315
Average	0.578	1.45	3.37	2538	-0.137	203	0.318

V	Rot. Visc.	ODSR	RTFO DSR	PAVDSR	Mass Loss	S-value	m-value
58	0.567	1.38	3.09	2594	-0.185	203	0.318
78	0.565	1.35	3.11	2556	-0.185	197	0.321
81	0.563	1.39	3.21	2722	-0.189	194	0.315
Average	0.565	1.37	3.14	2624	-0.186	198	0.318

COMBINED STATE BINDER GROUP ROUND ROBIN 2008-3
SUMMARY B

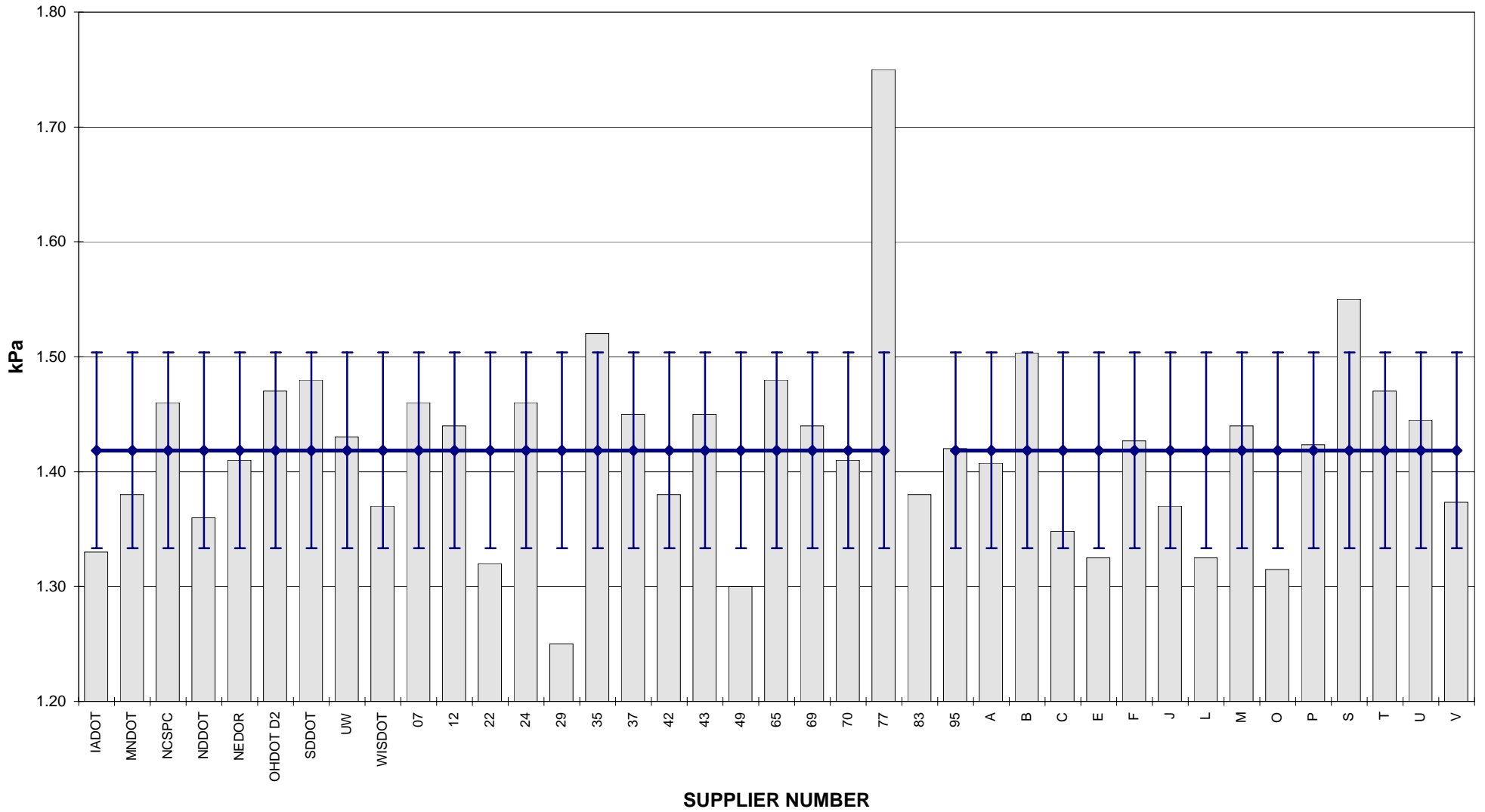
PG 64-28

ROTATIONAL VISCOSITY



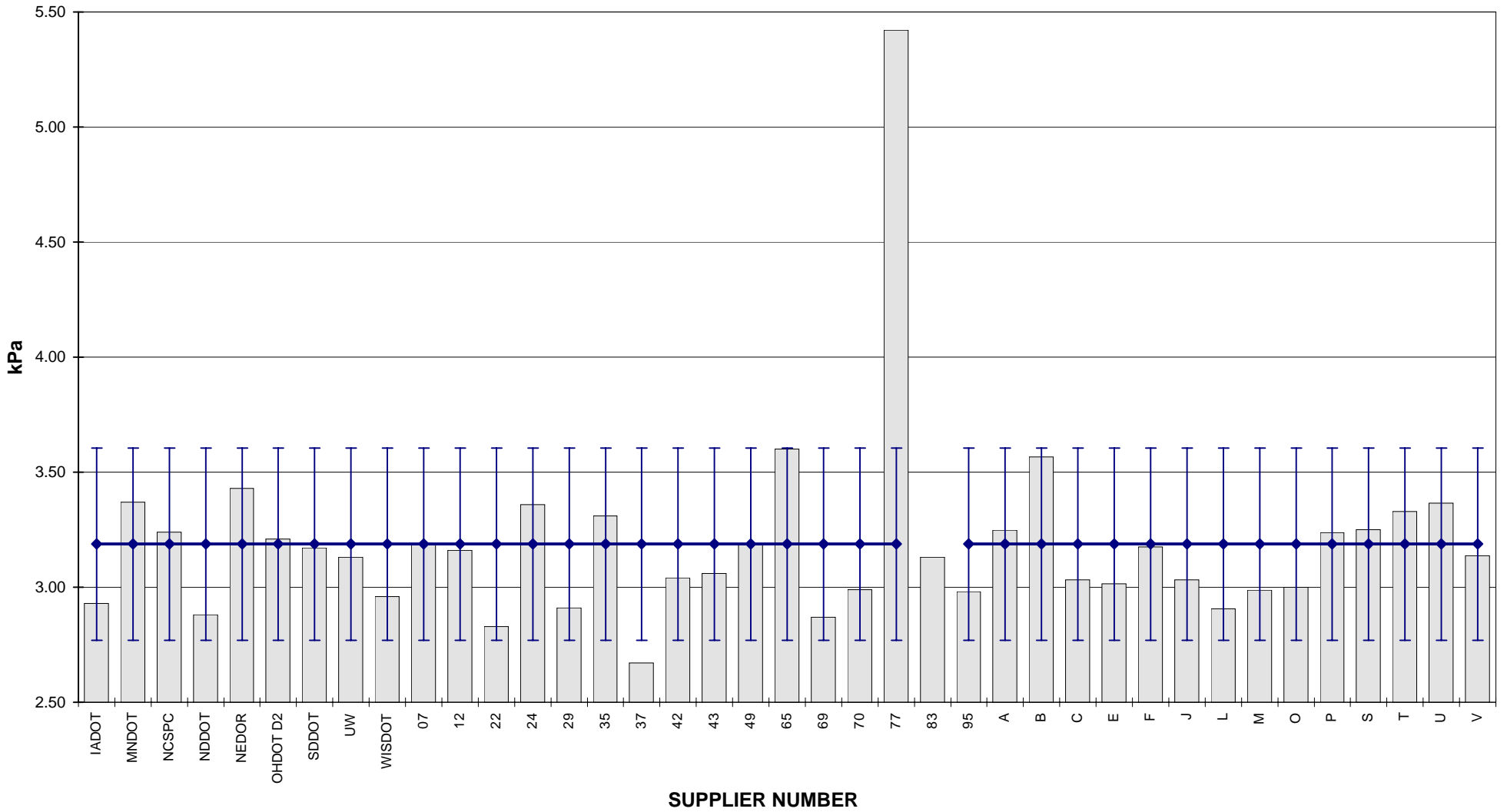
**COMBINED STATE BINDER GROUP ROUND ROBIN 2008-3
SUMMARY B
PG 64-28**

DSR - ORIGINAL

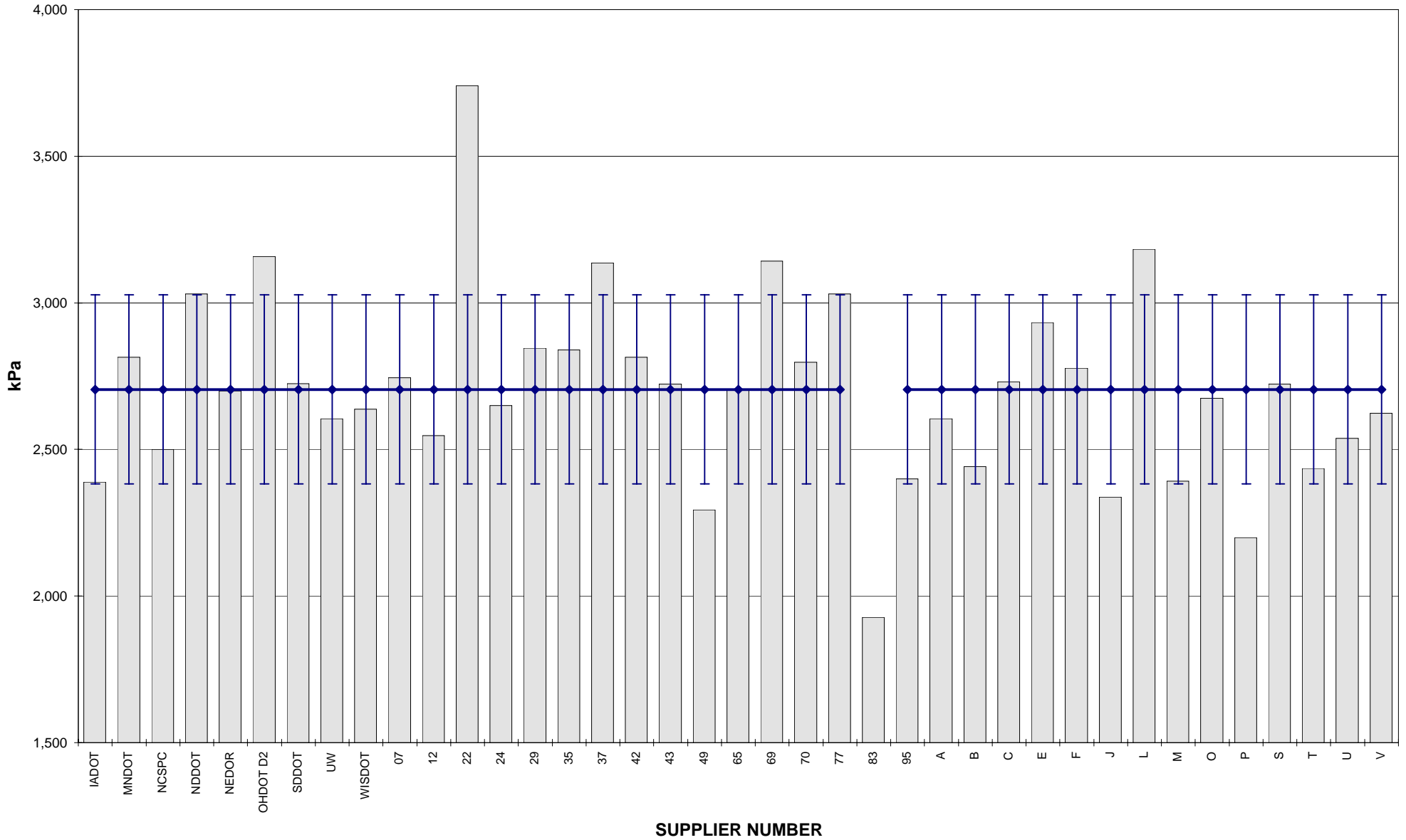


**COMBINED STATE BINDER GROUP ROUND ROBIN 2008-3
SUMMARY B
PG 64-28**

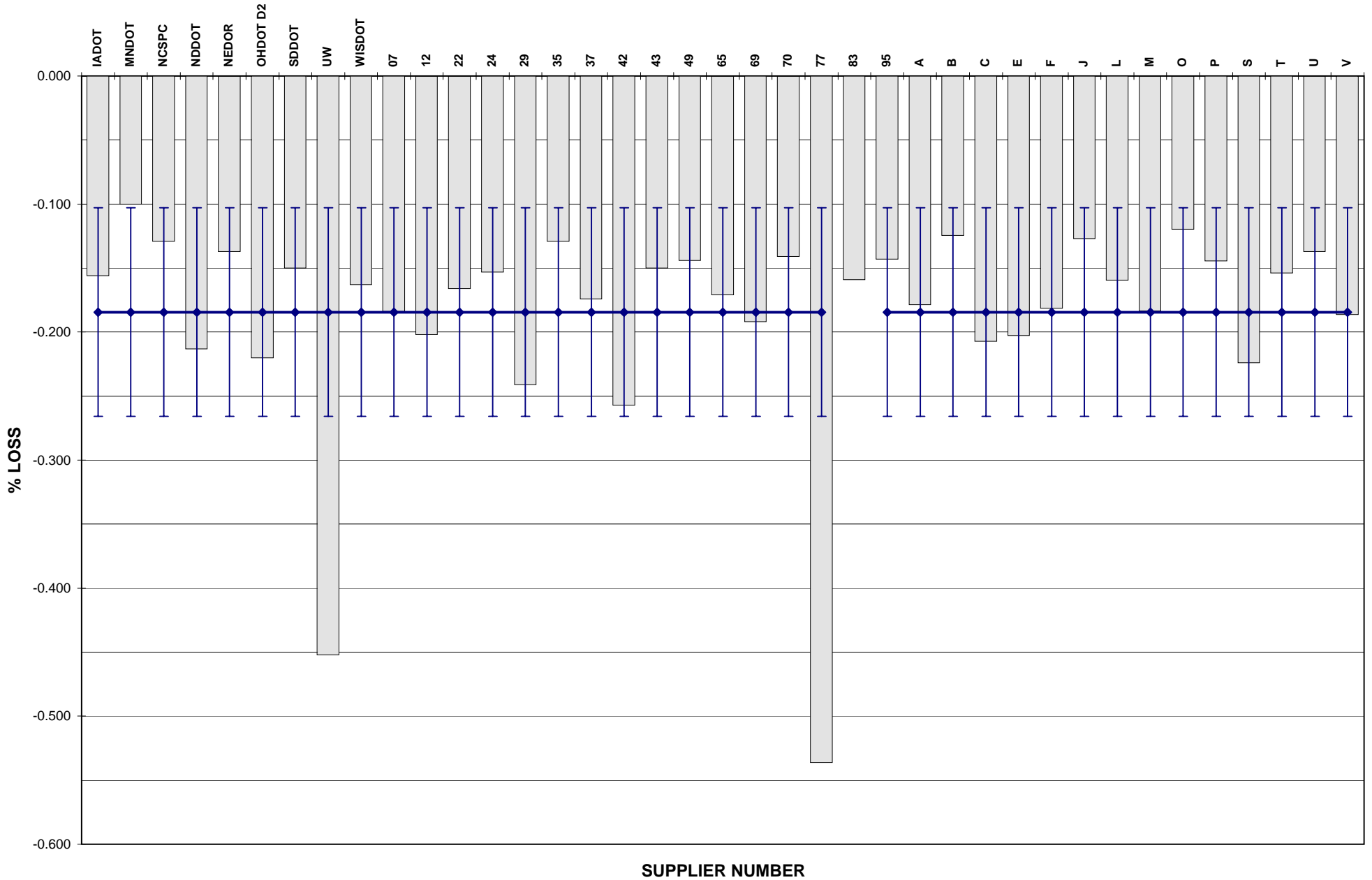
DSR - RTFO



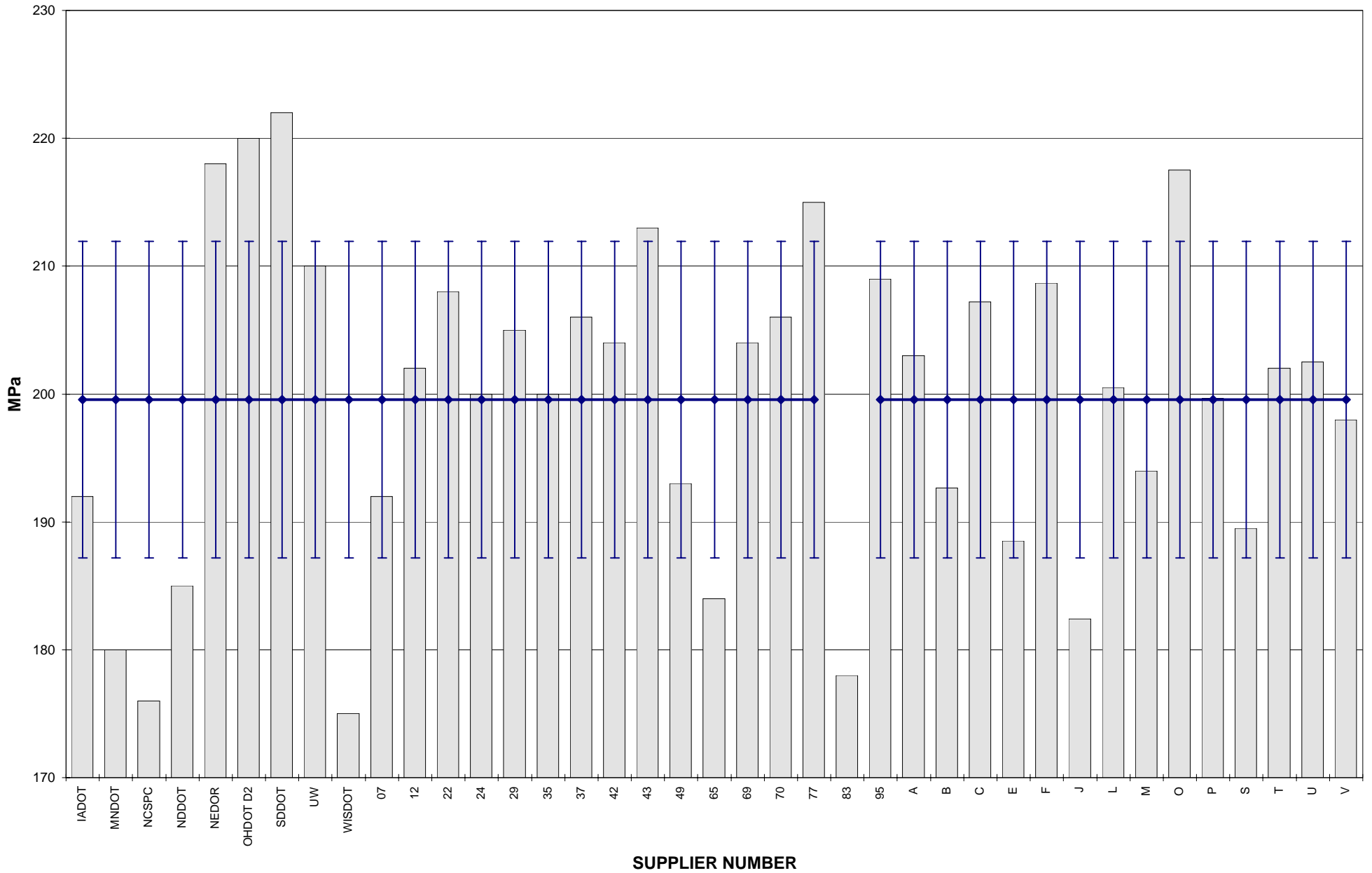
COMBINED STATE BINDER GROUP ROUND ROBIN 2008-3
SUMMARY B
PG 64-28
DSR - PAV



COMBINED STATE BINDER GROUP ROUND ROBIN 2008-3
 SUMMARY B
 PG 64-28
RTFO MASS LOSS



COMBINED STATE BINDER GROUP ROUND ROBIN 2008-3
SUMMARY B
PG 64-28
BBR STIFFNESS



COMBINED STATE BINDER GROUP ROUND ROBIN 2008-3
SUMMARY B
PG 64-28
BBR m-VALUE

